



Long Acre | | Bath | BA1 5NL

£1,175 Per month

PLE | Property  
Link Estates



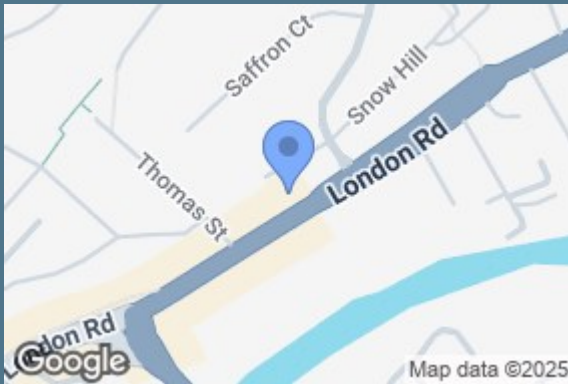
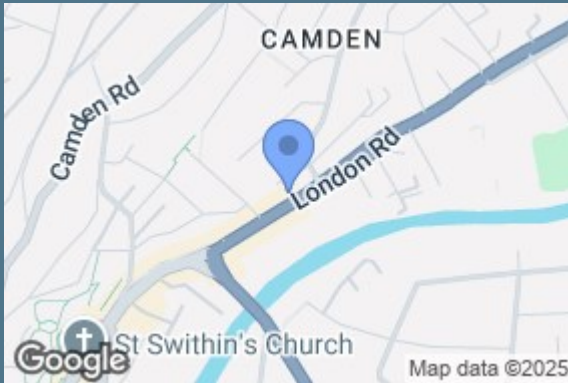
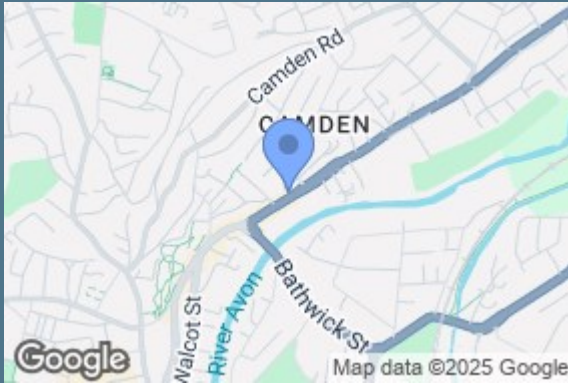
Long Acre |  
Bath | BA1 5NL  
£1,175 Per month  
EPC Band: E | Council Tax Band: B

Unfurnished 1 bedroom apartment with lovely quiet communal rear garden. A modern compact living space located on the top floor comprising of entrance hallway, well equipped fitted kitchen with ample work space and storage, washing machine and dishwasher. The bedroom and Livingroom are bright and airy. bin and bike store. Available immediately unfurnished.

- Attic Apartment
- Close city centre
- Newly decorated
- Light and airy
- Modern fitted kitchen
- Modern shower room
- Lovely quiet communal rear garden
- Bike store
- Long Leasehold

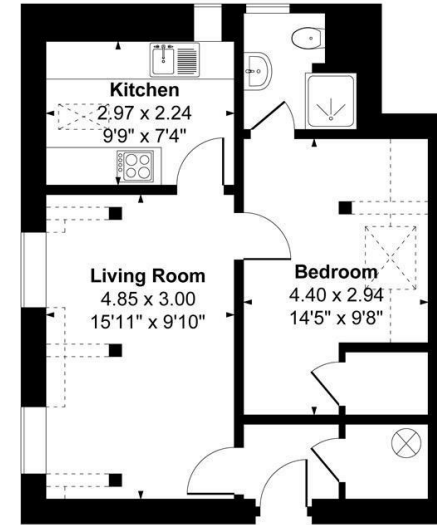




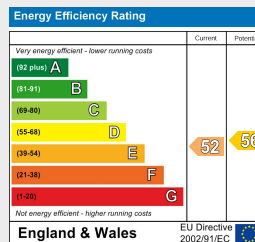


## 18 The Coachworks, Bath, BA1 5NL

Approximate Gross Internal Area  
Main House = 43 sq m (462 sq ft)



© Meyer Energy Ltd 2025. Drawn to RICS guidelines. Not drawn to scale.  
Plan is for illustration purposes only. All features, door openings, and window locations are approximate.  
All measurements and areas are approximate and should not be relied on as a statement of fact.



30 Charles Street

Bath

BA1 1HU

01225 447 440

bath@propertylinkstates.com

propertylinkstates.com